



# Economic Overview

---

## GO Va Region 9

---



Demographic Profile..... 3

Employment Trends ..... 5

Unemployment Rate ..... 5

Wage Trends..... 6

Cost of Living Index..... 7

Industry Snapshot..... 8

Occupation Snapshot ..... 10

Industry Clusters..... 12

Education Levels..... 13

Gross Domestic Product..... 14

GO Va Region 9 Regional Map..... 15

Region Definition..... 16

FAQ ..... 17

# Demographic Profile

The population in the GO Va Region 9 was 433,466 per American Community Survey data for 2016-2020.

The region has a civilian labor force of 221,598 with a participation rate of 62.9%. Of individuals 25 to 64 in the GO Va Region 9, 39.8% have a bachelor's degree or higher which compares with 34.3% in the nation.

The median household income in the GO Va Region 9 is \$79,349 and the median house value is \$320,977.

## Summary<sup>1</sup>

	Percent			Value		
	GO Va Region 9	Virginia	USA	GO Va Region 9	Virginia	USA
<b>Demographics</b>						
Population (ACS)	—	—	—	433,466	8,509,358	326,569,308
Male	48.5%	49.2%	49.2%	210,270	4,186,543	160,818,530
Female	51.5%	50.8%	50.8%	223,196	4,322,815	165,750,778
Median Age <sup>2</sup>	—	—	—	40.7	38.4	38.2
Under 18 Years	20.8%	22.0%	22.4%	90,120	1,868,597	73,296,738
18 to 24 Years	9.9%	9.5%	9.3%	43,071	808,812	30,435,736
25 to 34 Years	12.4%	13.9%	13.9%	53,717	1,180,909	45,485,165
35 to 44 Years	12.1%	13.0%	12.7%	52,531	1,110,409	41,346,677
45 to 54 Years	12.7%	13.2%	12.7%	55,176	1,122,875	41,540,736
55 to 64 Years	14.1%	13.0%	12.9%	60,994	1,103,411	42,101,439
65 to 74 Years	10.8%	9.2%	9.4%	46,724	780,233	30,547,950
75 Years and Over	7.2%	6.3%	6.7%	31,133	534,112	21,814,867
Race: White	79.9%	66.3%	70.4%	346,369	5,643,436	229,960,813
Race: Black or African American	11.5%	19.0%	12.6%	49,690	1,620,649	41,227,384
Race: American Indian and Alaska Native	0.3%	0.3%	0.8%	1,277	22,553	2,688,614
Race: Asian	3.0%	6.7%	5.6%	13,126	570,398	18,421,637
Race: Native Hawaiian and Other Pacific Islander	0.0%	0.1%	0.2%	171	5,994	611,404
Race: Some Other Race	1.5%	2.8%	5.1%	6,553	240,542	16,783,914
Race: Two or More Races	3.8%	4.8%	5.2%	16,280	405,786	16,875,542
Hispanic or Latino (of any race)	6.3%	9.5%	18.2%	27,335	810,770	59,361,020
<b>Population Growth</b>						
Population (Pop Estimates) <sup>4</sup>	—	—	—	441,239	8,590,563	329,484,123
Population Annual Average Growth <sup>4</sup>	0.9%	0.7%	0.6%	3,952	56,656	2,015,698
People per Square Mile	—	—	—	106.9	216.1	92.9
<b>Economic</b>						
Labor Force Participation Rate and Size (civilian population 16 years and over)	62.9%	65.2%	63.2%	221,598	4,382,484	164,759,496
Prime-Age Labor Force Participation Rate and Size (civilian population 25-54)	83.5%	83.9%	82.4%	134,195	2,793,827	105,137,520
Armed Forces Labor Force	0.2%	1.8%	0.4%	793	126,202	1,143,342
Veterans, Age 18-64	6.2%	8.0%	4.5%	16,294	416,941	8,920,267
Veterans Labor Force Participation Rate and Size, Age 18-64	81.0%	82.6%	76.8%	13,198	344,321	6,853,673
Median Household Income <sup>2</sup>	—	—	—	\$79,349	\$76,398	\$64,994
Per Capita Income	—	—	—	\$41,436	\$41,255	\$35,384
Mean Commute Time (minutes)	—	—	—	30.6	28.6	26.9
Commute via Public Transportation	1.7%	4.0%	4.6%	3,570	168,784	7,044,886
<b>Educational Attainment, Age 25-64</b>						
No High School Diploma	8.5%	8.3%	10.5%	18,988	375,945	17,929,220
High School Graduate	24.7%	22.7%	25.4%	54,912	1,026,183	43,289,555
Some College, No Degree	19.7%	19.2%	20.5%	43,754	865,424	34,959,338
Associate's Degree	7.3%	8.4%	9.3%	16,179	380,405	15,776,790

## Summary<sup>1</sup>

	Percent			Value		
	GO Va Region 9	Virginia	USA	GO Va Region 9	Virginia	USA
Bachelor's Degree	23.2%	23.9%	21.6%	51,550	1,079,210	36,888,244
Postgraduate Degree	16.7%	17.5%	12.7%	37,035	790,437	21,630,870
<b>Housing</b>						
Total Housing Units	—	—	—	185,651	3,537,788	138,432,751
Median House Value (of owner-occupied units) <sup>2</sup>	—	—	—	\$320,977	\$282,800	\$229,800
Homeowner Vacancy	1.4%	1.3%	1.4%	1,652	28,811	1,129,755
Rental Vacancy	3.1%	5.4%	5.8%	1,575	61,514	2,704,553
Renter-Occupied Housing Units (% of Occupied Units)	29.9%	33.3%	35.6%	48,870	1,060,350	43,552,843
Occupied Housing Units with No Vehicle Available (% of Occupied Units)	4.6%	6.1%	8.5%	7,462	193,853	10,344,521
<b>Social</b>						
Poverty Level (of all people)	9.7%	10.0%	12.8%	40,387	826,708	40,910,326
Households Receiving Food Stamps/SNAP	6.0%	7.9%	11.4%	9,810	251,747	13,892,407
Enrolled in Grade 12 (% of total population)	1.2%	1.3%	1.3%	5,123	112,273	4,358,865
Disconnected Youth <sup>3</sup>	1.8%	1.5%	2.5%	433	6,851	433,164
Children in Single Parent Families (% of all children)	28.7%	30.8%	34.0%	24,310	543,846	23,628,508
Uninsured	8.1%	8.2%	8.7%	34,580	681,362	28,058,903
With a Disability, Age 18-64	8.4%	9.4%	10.3%	22,051	484,166	20,231,217
With a Disability, Age 18-64, Labor Force Participation Rate and Size	46.3%	46.1%	43.2%	10,220	223,395	8,740,236
Foreign Born	7.4%	12.6%	13.5%	32,103	1,068,489	44,125,628
Speak English Less Than Very Well (population 5 yrs and over)	3.4%	5.8%	8.2%	13,883	466,588	25,312,024

Source: [JobsEQ®](#)

1. American Community Survey 2016-2020, unless noted otherwise

2. Median values for certain aggregate regions (such as MSAs) may be estimated as the weighted averages of the median values from the composing counties.

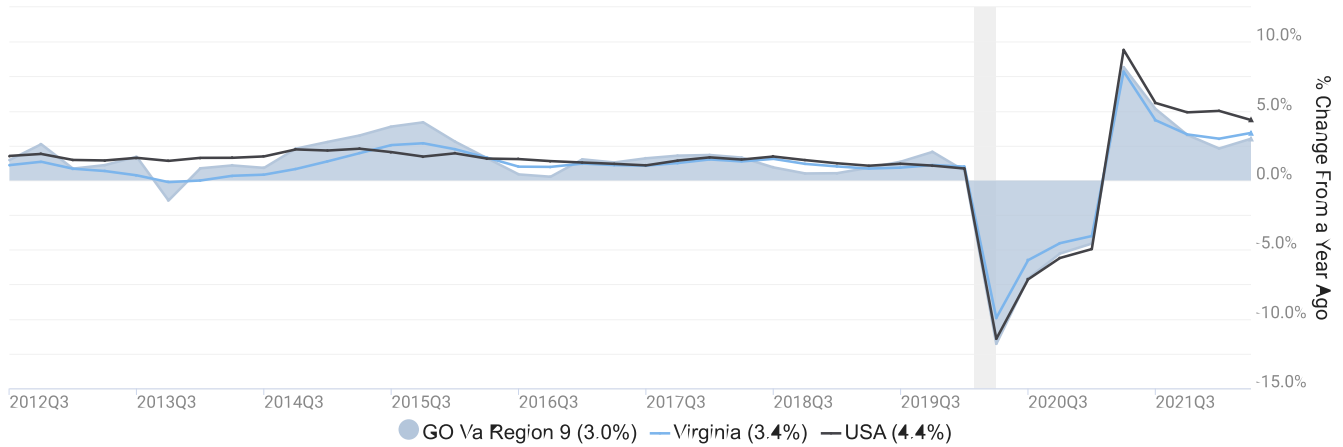
3. Disconnected Youth are 16-19 year olds who are (1) not in school, (2) not high school graduates, and (3) either unemployed or not in the labor force.

4. Census Population Estimate for 2020, annual average growth rate since 2010.

# Employment Trends

As of 2022Q2, total employment for the GO Va Region 9 was 186,671 (based on a four-quarter moving average). Over the year ending 2022Q2, employment increased 3.0% in the region.

Employment for GO Va Region 9

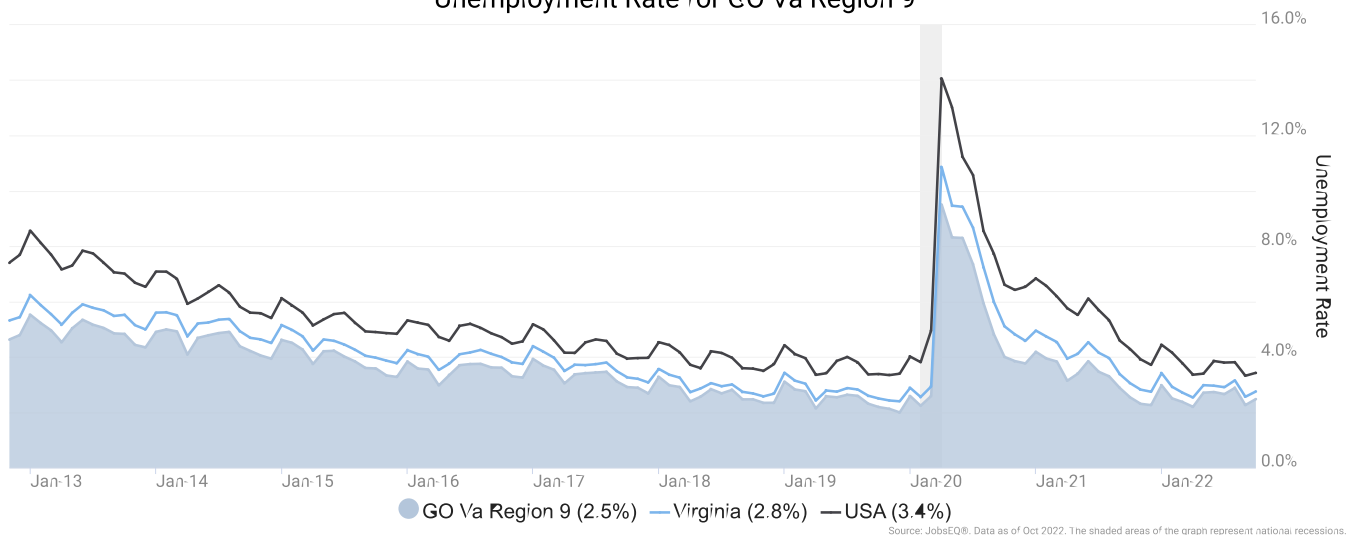


Employment data are derived from the Quarterly Census of Employment and Wages, provided by the Bureau of Labor Statistics and imputed where necessary. Data are updated through 2022Q1 with preliminary estimates updated to 2022Q2.

# Unemployment Rate

The unemployment rate for the GO Va Region 9 was 2.5% as of October 2022. The regional unemployment rate was lower than the national rate of 3.4%. One year earlier, in October 2021, the unemployment rate in the GO Va Region 9 was 2.5%.

Unemployment Rate for GO Va Region 9

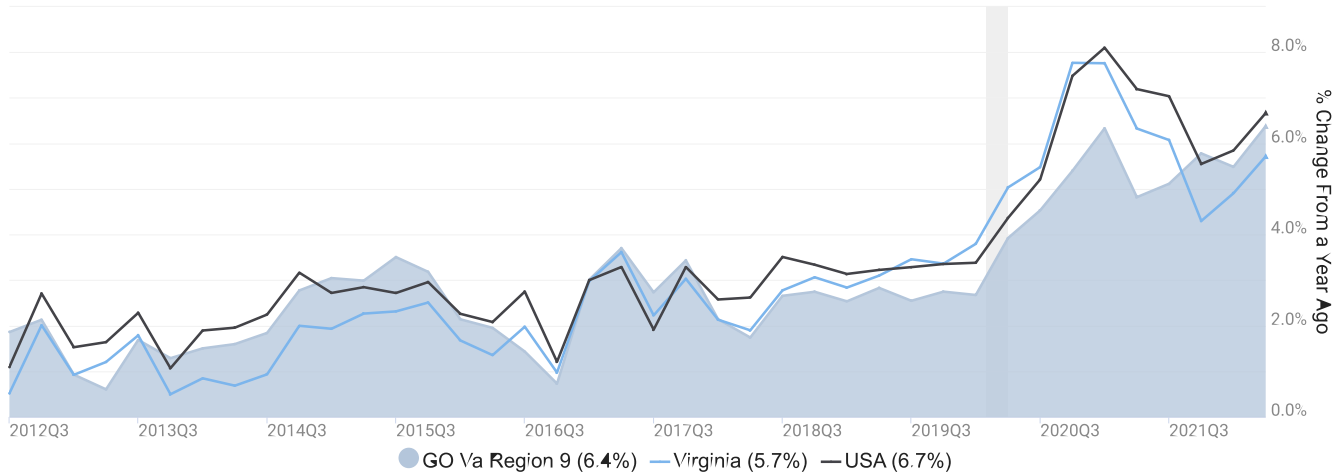


Unemployment rate data are from the Local Area Unemployment Statistics, provided by the Bureau of Labor Statistics and updated through October 2022.

# Wage Trends

The average worker in the GO Va Region 9 earned annual wages of \$57,698 as of 2022Q2. Average annual wages per worker increased 6.4% in the region over the preceding four quarters. For comparison purposes, annual average wages were \$67,777 in the nation as of 2022Q2.

Average Annual Wages for GO Va Region 9



Source: JobsEQ®. Data as of 2022Q2. The shaded areas of the graph represent national recessions.

Annual average wages per worker data are derived from the Quarterly Census of Employment and Wages, provided by the Bureau of Labor Statistics and imputed where necessary. Data are updated through 2022Q1 with preliminary estimates updated to 2022Q2.

# Cost of Living Index

The Cost of Living Index estimates the relative price levels for consumer goods and services. When applied to wages and salaries, the result is a measure of relative purchasing power. The cost of living is 17.2% higher in GO Va Region 9 than the U.S. average.

## Cost of Living Information

	Annual Average Salary	Cost of Living Index (Base US)	US Purchasing Power
GO Va Region 9	\$57,698	117.2	\$49,230
Virginia	\$67,885	115.0	\$59,033
USA	\$67,777	100.0	\$67,777

Source: [JobsEQ®](#)

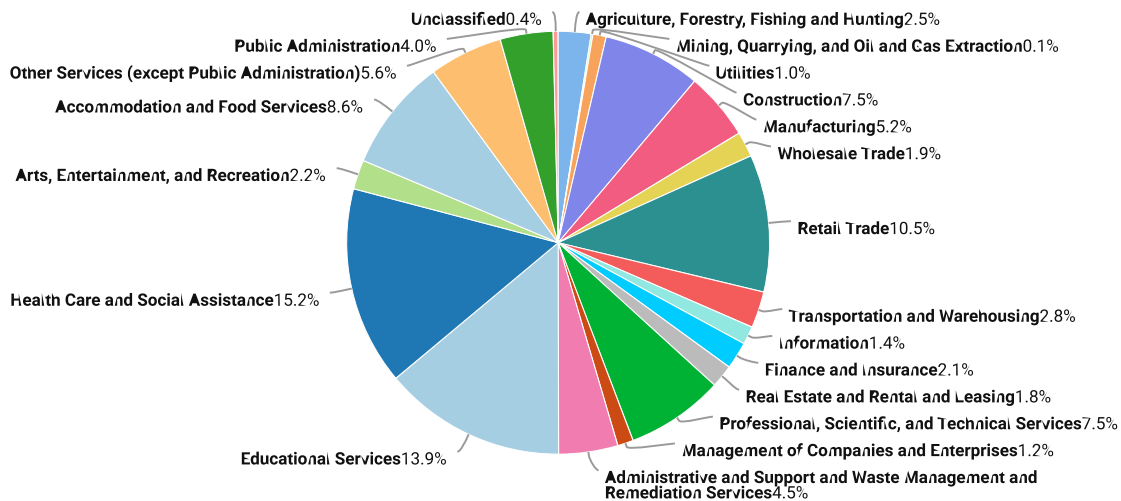
Data as of 2022Q2

Cost of Living per [COLI](#), data as of 2022Q3, imputed by Chmura where necessary.

# Industry Snapshot

The largest sector in the GO Va Region 9 is Health Care and Social Assistance, employing 28,363 workers. The next-largest sectors in the region are Educational Services (26,037 workers) and Retail Trade (19,587). High location quotients (LQs) indicate sectors in which a region has high concentrations of employment compared to the national average. The sectors with the largest LQs in the region are Utilities (LQ = 2.02), Agriculture, Forestry, Fishing and Hunting (1.85), and Educational Services (1.75).

Total Workers for GO Va Region 9 by Industry



Source: JobsEQ®. Data as of 2022Q2

Employment data are derived from the Quarterly Census of Employment and Wages, provided by the Bureau of Labor Statistics and imputed where necessary. Data are updated through 2022Q1 with preliminary estimates updated to 2022Q2.

Sectors in the GO Va Region 9 with the highest average wages per worker are Management of Companies and Enterprises (\$133,576), Finance and Insurance (\$124,843), and Utilities (\$110,458). Regional sectors with the best job growth (or most moderate job losses) over the last 5 years are Professional, Scientific, and Technical Services (+1,693 jobs), Construction (+837), and Transportation and Warehousing (+836).

Over the next 5 years, employment in the GO Va Region 9 is projected to expand by 7,821 jobs. The fastest growing sector in the region is expected to be Arts, Entertainment, and Recreation with a +3.1% year-over-year rate of growth. The strongest forecast by number of jobs over this period is expected for Health Care and Social Assistance (+1,869 jobs), Accommodation and Food Services (+1,716), and Educational Services (+949).



GO Va Region 9, 2022Q2<sup>1</sup>

NAICS	Industry	Empl	Current	5-Year History			5-Year Forecast				
			Avg Ann Wages	LQ	Empl Change	Ann %	Total Demand	Exits	Transfers	Empl Growth	Ann % Growth
62	Health Care and Social Assistance	28,363	\$64,521	1.06	537	0.4%	15,757	6,268	7,620	1,869	1.3%
61	Educational Services	26,037	\$57,179	1.75	-237	-0.2%	13,304	5,497	6,859	949	0.7%
44	Retail Trade	19,587	\$33,280	1.03	-941	-0.9%	12,477	5,168	7,727	-418	-0.4%
72	Accommodation and Food Services	16,077	\$25,353	1.03	-1,029	-1.2%	15,575	5,808	8,051	1,716	2.0%
23	Construction	14,011	\$55,001	1.26	837	1.2%	7,095	2,152	4,612	331	0.5%
54	Professional, Scientific, and Technical Services	13,962	\$91,870	1.03	1,693	2.6%	6,807	2,106	4,037	665	0.9%
81	Other Services (except Public Administration)	10,498	\$43,113	1.30	95	0.2%	6,577	2,425	3,513	639	1.2%
31	Manufacturing	9,661	\$58,878	0.64	550	1.2%	5,221	1,725	3,302	194	0.4%
56	Administrative and Support and Waste Management and Remediation Services	8,441	\$41,974	0.70	155	0.4%	5,237	1,871	3,045	321	0.7%
92	Public Administration	7,551	\$62,854	0.87	193	0.5%	3,658	1,352	2,182	124	0.3%
48	Transportation and Warehousing	5,201	\$60,744	0.56	836	3.6%	3,250	1,131	1,805	314	1.2%
11	Agriculture, Forestry, Fishing and Hunting	4,682	\$30,027	1.85	-158	-0.7%	2,934	1,137	1,712	85	0.4%
71	Arts, Entertainment, and Recreation	4,173	\$36,183	1.19	-340	-1.6%	3,709	1,234	1,778	697	3.1%
52	Finance and Insurance	3,882	\$124,843	0.51	152	0.8%	1,748	592	1,138	18	0.1%
42	Wholesale Trade	3,587	\$75,586	0.51	259	1.5%	1,929	652	1,235	42	0.2%
53	Real Estate and Rental and Leasing	3,270	\$58,898	0.99	174	1.1%	1,671	664	946	61	0.4%
51	Information	2,584	\$92,560	0.69	-693	-4.6%	1,408	409	836	163	1.2%
55	Management of Companies and Enterprises	2,269	\$133,576	0.81	126	1.2%	1,019	346	669	4	0.0%
22	Utilities	1,918	\$110,458	2.02	62	0.7%	725	277	578	-130	-1.4%
99	Unclassified	681	\$53,279	2.14	185	6.5%	416	150	237	30	0.9%
21	Mining, Quarrying, and Oil and Gas Extraction	236	\$72,158	0.37	-29	-2.3%	130	35	86	8	0.7%
<b>Total - All Industries</b>		<b>186,671</b>	<b>\$57,698</b>	<b>1.00</b>	<b>2,425</b>	<b>0.3%</b>	<b>110,874</b>	<b>40,349</b>	<b>62,704</b>	<b>7,821</b>	<b>0.8%</b>

Source: [JobsEQ®](http://www.chmuraecon.com/jobseq)

Data as of 2022Q2

Note: Figures may not sum due to rounding.

1. All data based upon a four-quarter moving average.

Exits and transfers are approximate estimates based upon occupation separation rates.

Employment data are derived from the Quarterly Census of Employment and Wages, provided by the Bureau of Labor Statistics and imputed where necessary. Data are updated through 2022Q1 with preliminary estimates updated to 2022Q2. Forecast employment growth uses national projections adapted for regional growth patterns.

# Occupation Snapshot

The largest major occupation group in the GO Va Region 9 is Office and Administrative Support Occupations, employing 19,885 workers. The next-largest occupation groups in the region are Sales and Related Occupations (16,498 workers) and Educational Instruction and Library Occupations (15,431). High location quotients (LQs) indicate occupation groups in which a region has high concentrations of employment compared to the national average. The major groups with the largest LQs in the region are Educational Instruction and Library Occupations (LQ = 1.55), Farming, Fishing, and Forestry Occupations (1.52), and Building and Grounds Cleaning and Maintenance Occupations (1.25).

Occupation groups in the GO Va Region 9 with the highest average wages per worker are Management Occupations (\$113,300), Legal Occupations (\$111,300), and Computer and Mathematical Occupations (\$95,200). The unemployment rate in the region varied among the major groups from 0.9% among Healthcare Practitioners and Technical Occupations to 5.0% among Food Preparation and Serving Related Occupations.

Over the next 5 years, the fastest growing occupation group in the GO Va Region 9 is expected to be Personal Care and Service Occupations with a +2.4% year-over-year rate of growth. The strongest forecast by number of jobs over this period is expected for Food Preparation and Serving Related Occupations (+1,517 jobs) and Healthcare Support Occupations (+836). Over the same period, the highest separation demand (occupation demand due to retirements and workers moving from one occupation to another) is expected in Food Preparation and Serving Related Occupations (14,632 jobs) and Office and Administrative Support Occupations (10,936).

GO Va Region 9, 2022Q2<sup>1</sup>

SOC	Occupation	Empl	Mean Ann Wages <sup>2</sup>	LQ	Current		Online Job Ads <sup>3</sup>	5-Year History		Total Demand	5-Year Forecast			
					Unempl	Unempl Rate		Empl Change	Ann %		Exits	Transfers	Empl Growth	Ann % Growth
43-0000	Office and Administrative Support	19,885	\$41,700	0.86	569	2.5%	953	-1,094	-1.1%	10,704	4,813	6,123	-232	-0.2%
41-0000	Sales and Related	16,498	\$42,900	0.94	644	3.5%	1,275	-923	-1.1%	10,821	4,417	6,519	-114	-0.1%
25-0000	Educational Instruction and Library	15,431	\$64,900	1.55	264	1.7%	1,126	-315	-0.4%	7,900	3,394	3,724	782	1.0%
35-0000	Food Preparation and Serving Related	15,220	\$28,400	1.04	848	5.0%	1,115	-803	-1.0%	16,149	6,234	8,398	1,517	1.9%
11-0000	Management	12,333	\$113,300	0.97	185	1.4%	1,293	662	1.1%	5,716	1,834	3,356	525	0.8%
13-0000	Business and Financial Operations	12,273	\$80,600	1.03	226	1.6%	652	1,982	3.6%	5,911	1,689	3,708	514	0.8%
53-0000	Transportation and Material Moving	12,176	\$38,600	0.75	575	3.8%	915	948	1.6%	8,581	3,035	4,987	559	0.9%
29-0000	Healthcare Practitioners and Technical	12,087	\$86,100	1.11	108	0.9%	2,731	211	0.4%	3,828	1,565	1,811	452	0.7%
47-0000	Construction and Extraction	9,987	\$47,600	1.18	420	3.7%	186	272	0.6%	5,286	1,523	3,476	287	0.6%
31-0000	Healthcare Support	8,145	\$30,400	0.99	241	2.7%	767	312	0.8%	6,447	2,715	2,896	836	2.0%
37-0000	Building and Grounds Cleaning and Maintenance	7,686	\$31,600	1.25	306	3.7%	383	-235	-0.6%	5,467	2,187	2,949	331	0.8%
49-0000	Installation, Maintenance, and Repair	7,050	\$51,000	0.98	146	1.8%	441	56	0.2%	3,686	1,140	2,295	251	0.7%
51-0000	Production	6,694	\$42,900	0.63	239	3.1%	192	-257	-0.7%	3,718	1,294	2,396	28	0.1%
15-0000	Computer and Mathematical	6,644	\$95,200	1.04	80	1.1%	831	1,288	4.4%	2,888	727	1,734	428	1.3%
39-0000	Personal Care and Service	5,111	\$32,500	1.13	279	4.7%	256	-140	-0.5%	4,677	1,777	2,261	639	2.4%
21-0000	Community and Social Service	4,138	\$51,500	1.25	57	1.3%	348	232	1.2%	2,588	772	1,439	376	1.8%

GO Va Region 9, 2022Q2<sup>1</sup>

SOC	Occupation	Empl	Mean Ann Wages <sup>2</sup>	Current			5-Year History			5-Year Forecast				
				LQ	Unempl	Unempl Rate	Online Job Ads <sup>3</sup>	Empl Change	Ann %	Total Demand	Exits	Transfers	Empl Growth	Ann % Growth
27-0000	Arts, Design, Entertainment, Sports, and Media	3,783	\$63,200	1.15	142	3.4%	232	-68	-0.4%	2,210	757	1,245	207	1.1%
33-0000	Protective Service	3,625	\$50,200	0.91	88	1.9%	279	-70	-0.4%	2,104	842	1,147	115	0.6%
17-0000	Architecture and Engineering	2,585	\$90,800	0.85	42	1.4%	250	78	0.6%	945	312	617	16	0.1%
19-0000	Life, Physical, and Social Science	2,011	\$74,600	1.23	45	2.1%	357	186	2.0%	968	214	708	46	0.5%
45-0000	Farming, Fishing, and Forestry	1,836	\$34,700	1.52	67	4.1%	23	108	1.2%	1,519	390	1,069	61	0.7%
23-0000	Legal	1,475	\$111,300	0.92	18	1.1%	29	-6	-0.1%	571	214	304	54	0.7%
<b>Total - All Occupations</b>		<b>186,671</b>	<b>\$56,400</b>	<b>1.00</b>	<b>5,588</b>	<b>2.7%</b>	<b>14,632</b>	<b>2,425</b>	<b>0.3%</b>	<b>112,818</b>	<b>41,844</b>	<b>63,163</b>	<b>7,811</b>	<b>0.8%</b>

Source: [JobsEQ®](#)

Data as of 2022Q2 unless noted otherwise

Note: Figures may not sum due to rounding.

1. Data based on a four-quarter moving average unless noted otherwise.

2. Wage data are as of 2021 and represent the average for all Covered Employment

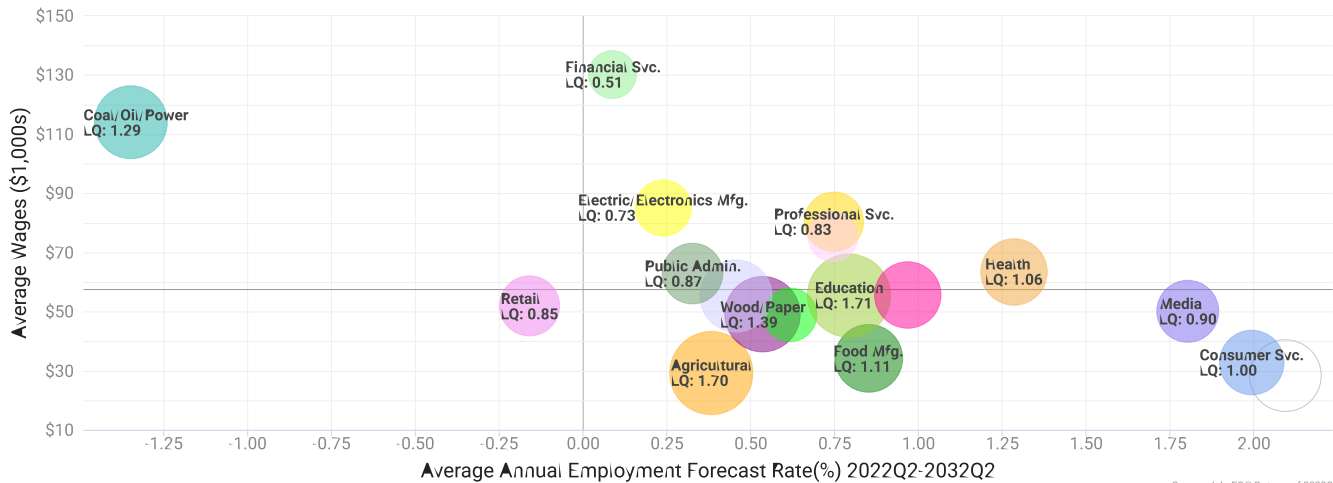
3. Data represent found online ads active within the last thirty days in the selected region; data represents a sampling rather than the complete universe of postings. Ads lacking zip code information but designating a place (city, town, etc.) may be assigned to the zip code with greatest employment in that place for queries in this analytic. Due to alternative county-assignment algorithms, ad counts in this analytic may not match that shown in RTI (nor in the popup window ad list).

Occupation employment data are estimated via industry employment data and the estimated industry/occupation mix. Industry employment data are derived from the Quarterly Census of Employment and Wages, provided by the Bureau of Labor Statistics and currently updated through 2022Q1, imputed where necessary with preliminary estimates updated to 2022Q2. Wages by occupation are as of 2021 provided by the BLS and imputed where necessary. Forecast employment growth uses national projections from the Bureau of Labor Statistics adapted for regional growth patterns.

# Industry Clusters

A cluster is a geographic concentration of interrelated industries or occupations. The industry cluster in the GO Va Region 9 with the highest relative concentration is Education with a location quotient of 1.71. This cluster employs 31,666 workers in the region with an average wage of \$55,445. Employment in the Education cluster is projected to expand in the region about 0.8% per year over the next ten years.

Industry Clusters for GO Va Region 9 as of 2022Q2



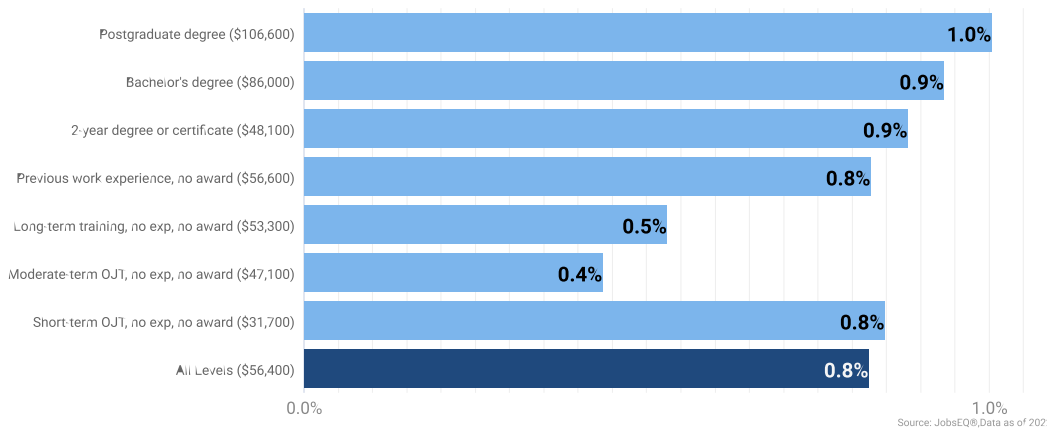
Source: JobsEQ®, Data as of 2022Q2

Location quotient and average wage data are derived from the Quarterly Census of Employment and Wages, provided by the Bureau of Labor Statistics, imputed where necessary, and updated through 2022Q1 with preliminary estimates updated to 2022Q2. Forecast employment growth uses national projections from the Bureau of Labor Statistics adapted for regional growth patterns.

# Education Levels

Expected growth rates for occupations vary by the education and training required. While all employment in the GO Va Region 9 is projected to grow 0.8% over the next ten years, occupations typically requiring a postgraduate degree are expected to grow 1.0% per year, those requiring a bachelor’s degree are forecast to grow 0.9% per year, and occupations typically needing a 2-year degree or certificate are expected to grow 0.9% per year.

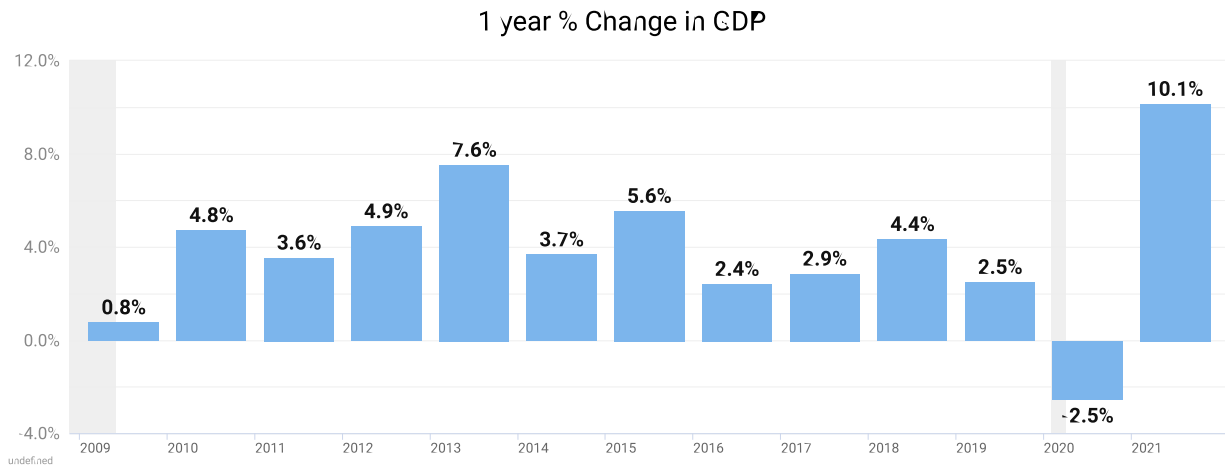
**Annual Average Projected Job Growth by Training Required**



Employment by occupation data are estimates as of 2022Q2. Education levels of occupations are based on BLS assignments. Forecast employment growth uses national projections from the Bureau of Labor Statistics adapted for regional growth patterns.

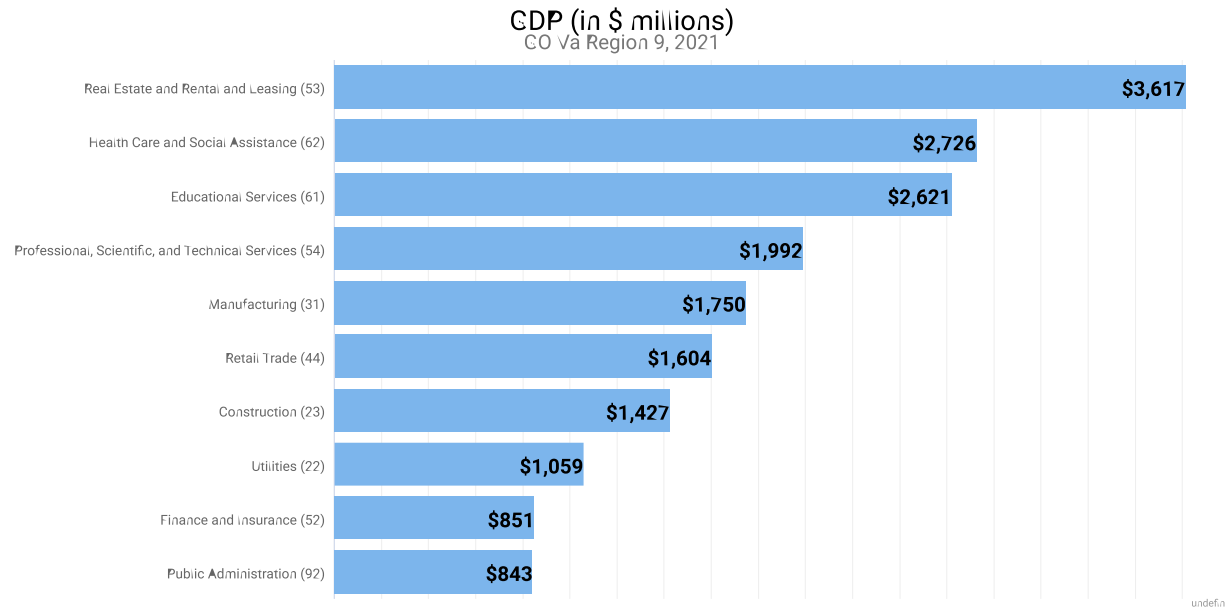
# Gross Domestic Product

Gross Domestic Product (GDP) is the total value of goods and services produced by a region. In 2021, nominal GDP in the GO Va Region 9 expanded 10.1%. This follows a contraction of 2.5% in 2020. As of 2021, total GDP in the GO Va Region 9 was \$23,507,304,000.



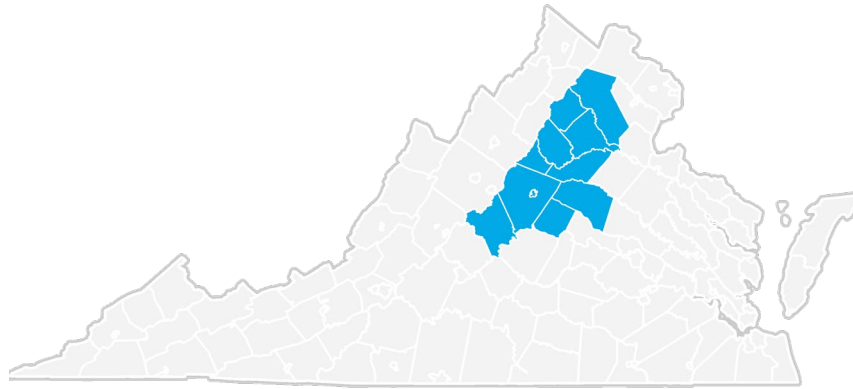
Gross Domestic Product data are provided by the Bureau of Economic Analysis, imputed by Chmura where necessary, updated through 2021.

Of the sectors in the GO Va Region 9, Real Estate and Rental and Leasing contributed the largest portion of GDP in 2021, \$3,616,516,000. The next-largest contributions came from Health Care and Social Assistance (\$2,725,900,000); Educational Services (\$2,621,144,000); and Professional, Scientific, and Technical Services (\$1,991,896,000).



Gross Domestic Product data are provided by the Bureau of Economic Analysis, imputed by Chmura where necessary, updated through 2021.

# GO Va Region 9 Regional Map



# Region Definition

**GO Va Region 9 is defined as the following counties:**

Albemarle County, Virginia

---

Culpeper County, Virginia

---

Fauquier County, Virginia

---

Fluvanna County, Virginia

---

Greene County, Virginia

---

Louisa County, Virginia

---

Madison County, Virginia

---

Nelson County, Virginia

---

Orange County, Virginia

---

Rappahannock County, Virginia

---

Charlottesville City, Virginia

---



# FAQ

## What is a location quotient?

A location quotient (LQ) is a measurement of concentration in comparison to the nation. An LQ of 1.00 indicates a region has the same concentration of an industry (or occupation) as the nation. An LQ of 2.00 would mean the region has twice the expected employment compared to the nation and an LQ of 0.50 would mean the region has half the expected employment in comparison to the nation.

## What is separation demand?

Separation demand is the number of jobs required due to separations—labor force exits (including retirements) and turnover resulting from workers moving from one occupation into another. Note that separation demand does not include all turnover—it does not include when workers stay in the same occupation but switch employers. The total projected demand for an occupation is the sum of the separation demand and the growth demand (which is the increase or decrease of jobs in an occupation expected due to expansion or contraction of the overall number of jobs in that occupation).

## What is a cluster?

A cluster is a geographic concentration of interrelated industries or occupations. If a regional cluster has a location quotient of 1.25 or greater, the region is considered to possess a competitive advantage in that cluster.

## What is the difference between industry wages and occupation wages?

Industry wages and occupation wages are estimated via separate data sets, often the time periods being reported do not align, and wages are defined slightly differently in the two systems (for example, certain bonuses are included in the industry wages but not the occupation wages). It is therefore common that estimates of the average industry wages and average occupation wages in a region do not match exactly.

## What is NAICS?

The North American Industry Classification System (NAICS) is used to classify business establishments according to the type of economic activity. The NAICS Code comprises six levels, from the “all industry” level to the 6-digit level. The first two digits define the top level category, known as the “sector,” which is the level examined in this report.

## What is SOC?

The Standard Occupational Classification system (SOC) is used to classify workers into occupational categories. All workers are classified into one of over 804 occupations according to their occupational definition. To facilitate classification, occupations are combined to form 22 major groups, 95 minor groups, and 452 occupation groups. Each occupation group includes detailed occupations requiring similar job duties, skills, education, or experience.

## About This Report

This report and all data herein were produced by JobsEQ®, a product of Chmura Economics & Analytics. The information contained herein was obtained from sources we believe to be reliable. However, we cannot guarantee its accuracy and completeness.